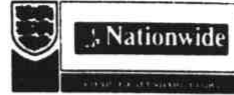


**Letter from the Newark Sports
Development Trust
dated 14th July 2004**

NEWARK



CHARTER STANDARD CLUBS
Maureen McGuinness
Secretary

Paul Baggaley
Chairman
Newark Sports Development Trust
93 Charles Street
Newark
Notts
NG24 1RN

Darren Farmer
The Catesby Property Group
Conrad House
Birmingham Road
Stratford-upon-Avon
Warwickshire
CV37 0AA

14th July 2004

Dear Darren

Land to the South of Newark

Please find enclosed an outline of the proposed sporting development of the land currently owned by Catesby.

Please be aware that this drawing is in no way a representation of a proposed scheme, but is merely intended to give an impression as to how much land might be used.

I asked the draftsman not to show anything at the top of the site near the junction of Staple Lane because from the discussion we had with planners they seemed to indicate that any proposed relief road would utilise this junction. As a group however we feel that we may be able to manage and use the whole of this site.

If you require any further information please do not hesitate to contact either by letter or by phone on 01636 679316 or 07903 623369.

Yours sincerely

Paul Baggaley
Chairman
Newark Town FC

BARTON WILLMORE MIDLANDS	
RECEIVED	
10 AUG 2005	
Seen by:	
File:	14088/A3
Action:	Noted + File
By:	MS
Date:	20/9



THE FOOTBALL
ASSOCIATION
Newark Town Football Club
Est. 1922

Outline Proposal for the Future Development of Sports Facilities in Newark

Executive Summary

There is little doubt that overall there has been and continues to be a steep decline in the quality and quantity of sports facilities available to sports clubs and the wider community in the Newark area.

Statement of Need

The contribution that sport makes to the vitality and well being of a community is well documented and the value of sport continues to chime with politicians, health professionals and public servants alike.

There is a wide and well founded belief that sport is good for society and the individual and the benefits are well documented.

It is possible to track a decline in the quantity and quality of sports facilities in Newark over recent years.

The Grove Sports Centre, NSK Sports Fields, Newark Lawn Tennis Club, Flowserve Sports and Social Club have all seen a decline in quality and quantity of their sports facilities.

The Magdalene and Sconce Hills Schools have closed and their sports facilities lost. John Smiths Sports Club has been lost and Hoval and Farrar have withdrawn from supporting local sports.

Overall the picture for local sports clubs who utilise facilities and provide access to sport and physical activity remains bleak. Caught between the decline in the quality and quantity of local facilities and the increase in the expectations of their users the future looks uncertain.

Project Description

It is for the reasons outlined above this paper would propose the development of a multi sport hub at a site suitably close to the town with sufficient space for expansion and the sharing of ancillary facilities that are common to all clubs. The development of this type of facility has been recently proposed by Sport England (see appendix 1).

The problem however is finding a site of sufficient size, close enough to the town without being prohibitively expensive. Such a site has been identified to the South of Newark (see appendix 2). The site is within three miles of the centre of the town and very close to Newark's largest urban communities of Balderton and Hawtonville. Moreover the site can be reached by a cycle track that runs from North Gate station to the gates of the British Gypsum works linking the whole town from North to South

Financial Considerations

Financial support for such a scheme would come from a number of sources.

Sport England

The Football Foundation

The Big Lottery Fund

Small grant aiding bodies

Charitable trusts

National Governing Bodies

Government funding that stipulate as a key criteria community involvement and partnership working such Neighbourhood Renewal Fund and the Future Builders Fund

The District and Town Council

Local businesses sponsorship

The LEA

Public Private Partnership

EMDA whose key criterion is job creation

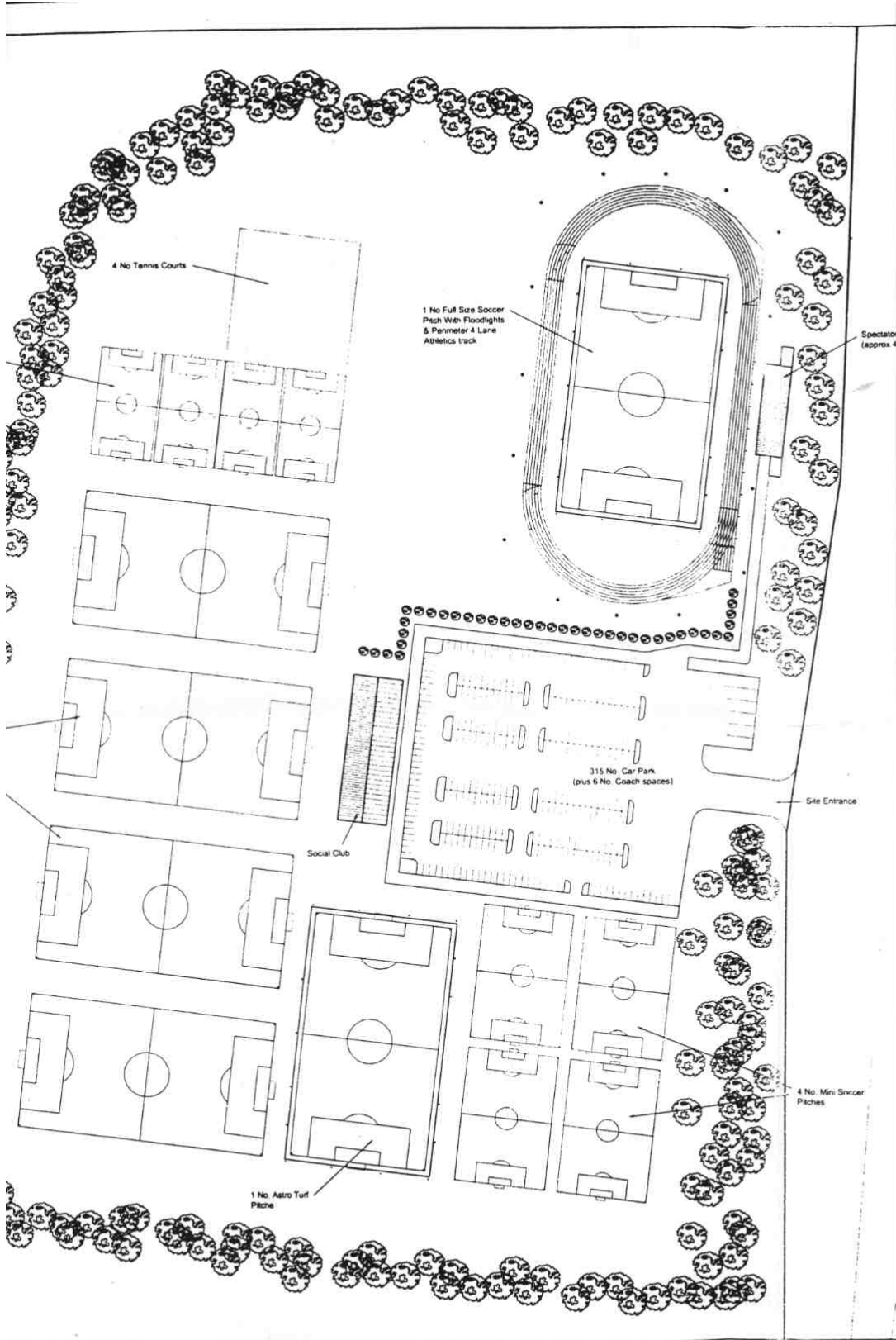
Lastly the sports clubs themselves are capable of raising small, but significant amounts of money. More importantly however these Clubs are essential to the development of any funding application

Organisational Information

The Newark Sports Development Trust is a collective of local sports clubs that have come together to try to reverse the decline in sports facilities in the area. These Clubs are in the process of forming a charitable trust that could be used as a vehicle to manage and develop a multi sports facility in the area. All of the Clubs have significant experience in running and maintaining sports facilities and would seek a long lease arrangement with Catesby Properties on the site outlined in this proposal.

Conclusion

The district of Newark is caught in a pincer movement between the falling quality and quantity of sport facilities and a growing population with rising expectations. In order to redress the balance the Newark Sports Trust would propose the development of a multi sports hub at the site identified in this paper.



LAYOUT - Scale 1:1000